



South Central Kansas MLS

South Central Kansas MLS

170 W. Dewey, Wichita, KS 67202

www.sckrealtors.com

January 20, 2016

South Central Kansas Multiple Listing Service Releases Home Sales Figures for December 2015

Homes sales in South Central Kansas fell by 1.2% in December compared to the prior year. Sales in December 2015 totaled 737 units, down from 746 in 2014.

Among existing homes, 686 units sold in December, an increase of 0.9% from 680 units that sold in 2014. The average sale price of existing homes was \$136,319. This represents an increase of 4.3% from the December 2014 average price of \$130,657.

For new construction, 51 sales occurred in December, down from 66 units the prior year, a decrease of 22.7%. The average sale price of new homes in December was \$311,577, up 9.4% from the same period last year.

A total of 564 contracts for sale were written in December 2015, up from 545 in December 2014. This is an increase of 3.5%. Contracts written during the month reflect, in part, sales that are set to close in the near future.

The inventory of active listings in South Central Kansas stood at 2,512 units at the end of December, which is down from 2,680 homes that were on the market at the end of December last year. At the current rate of sales, this figure represents 3.4 months' supply of homes on the market.

For questions and/or comments, please contact South Central Kansas MLS President Tim Holt at tim@timholt.biz or 316-729-0900.



MARKET OVERVIEW >>

South Central Kansas Home Sales Fell in December

Total home sales in South Central Kansas fell last month to 737 units, compared to 746 units in December 2014. Total sales volume was \$109.4 million, up from a year earlier.

The median sale price in December was \$130,500, up from \$125,000 a year earlier. Homes that sold in December were typically on the market for 31 days and sold for 98.0% of their list prices.

South Central Kansas Active Listings Down at End of December

The total number of active listings in South Central Kansas at the end of December was 2,512 units, down from 2,680 at the same point in 2014. This represents a 3.4 months' supply of homes available for sale. The median list price of homes on the market at the end of December was \$130,000.

During December, a total of 564 contracts were written up from 545 in December 2014. At the end of the month, there were 937 contracts pending, compared to 842 at the end of December 2014.

Your Association Working for You!

The South Central Kansas MLS statistical reports are one of the many benefits you receive from being a member of the REALTORS® of South Central Kansas. Through a partnership with the Kansas Association of REALTORS®, we will send you these reports each month to help you better serve your clients and promote your business.

Contact Information

Greg Fox, President
 South Central Kansas Multiple Listing Service
 170 W Dewey St
 Wichita, KS 67202
 316-688-0077
Greg.Fox@BetterKS.com
www.sckrealtors.com

Entire MLS System		December		
Summary Statistics		2015	2014	Change
Home Sales		737	746	-1.2%
Active Listings		2,512	2,680	-6.3%
Months' Supply		3.4	3.6	-5.1%
New Listings		646	650	-0.6%
Contracts Written		564	545	3.5%
Pending Contracts		937	842	11.3%
Sales Volume (1,000s)		109,405	107,648	1.6%
Average	Sale Price	148,447	144,300	2.9%
	List Price of Actives	198,170	187,982	5.4%
	Days on Market	57	69	-17.5%
	Percent of List	96.6%	96.6%	0.0%
	Percent of Original	93.7%	93.8%	-0.1%
Median	Sale Price	130,500	125,000	4.4%
	List Price of Actives	130,000	135,000	-3.7%
	Days on Market	31	40	-22.5%
	Percent of List	98.0%	97.9%	0.1%
	Percent of Original	96.5%	95.5%	1.1%

REPORT CONTENTS >>

- **Market Overview Statistics** – Page 2
- **Year-to-Date Statistics** – Page 3
- **Sold Listings Analysis** – Page 4
- **Active Listings Analysis** – Page 8
- **Months' Supply Analysis** – Page 12
- **New Listings Analysis** – Page 13
- **Contracts Written Analysis** – Page 16
- **Pending Contracts Analysis** – Page 20

MARKET OVERVIEW STATISTICS

**ENTIRE MLS SYSTEM
BREAKDOWNS BY HOME TYPE
AS OF 1/15/2016**

SUMMARY >>

December MLS Statistics		2015			2014			2013			
By Property Type		Total	Existing	New	Total	Existing	New	Total	Existing	New	
Home Sales		737	686	51	746	680	66	654	601	53	
	Change from prior year	-1.2%	0.9%	-22.7%	14.1%	13.1%	24.5%	3.0%	0.8%	35.9%	
Active Listings		2,512	2,285	227	2,680	2,438	242	2,827	2,644	183	
	Change from prior year	-6.3%	-6.3%	-6.2%	-5.2%	-7.8%	32.2%	-17.7%	-16.4%	-32.7%	
Months' Supply		3.4	3.3	4.5	3.6	3.6	3.7	4.3	4.4	3.5	
	Change from prior year	-5.1%	-7.1%	21.4%	-16.9%	-18.5%	6.2%	-20.1%	-17.1%	-50.5%	
New Listings		646	621	25	650	604	46	703	643	60	
	Change from prior year	-0.6%	2.8%	-45.7%	-7.5%	-6.1%	-23.3%	6.7%	2.6%	87.5%	
Contracts Written		564	538	26	545	505	40	546	482	64	
	Change from prior year	3.5%	6.5%	-35.0%	-0.2%	4.8%	-37.5%	3.8%	-4.6%	204.8%	
Pending Contracts		937	850	87	842	764	78	868	771	97	
	Change from prior year	11.3%	11.3%	11.5%	-3.0%	-0.9%	-19.6%	N/A	N/A	N/A	
Sales Volume (1,000s)		109,405	93,515	15,890	107,648	88,846	18,801	91,823	76,775	15,048	
	Change from prior year	1.6%	5.3%	-15.5%	17.2%	15.7%	24.9%	12.5%	8.6%	37.7%	
Average	Sale Price	148,447	136,319	311,577	144,300	130,657	284,871	140,403	127,745	283,930	
		Change from prior year	2.9%	4.3%	9.4%	2.8%	2.3%	0.3%	9.2%	7.7%	1.3%
	List Price of Actives	198,170	185,310	326,656	187,982	175,284	315,073	186,034	179,352	281,982	
		Change from prior year	5.4%	5.7%	3.7%	1.0%	-2.3%	11.7%	N/A	N/A	N/A
	Days on Market	57	54	94	69	68	83	75	77	54	
		Change from prior year	-17.6%	-20.0%	13.4%	-8.1%	-12.0%	52.7%	-7.2%	-6.2%	-15.2%
Percent of List		96.6%	96.3%	100.7%	96.6%	96.0%	102.4%	96.3%	95.9%	101.3%	
		Change from prior year	0.0%	0.2%	-1.6%	0.3%	0.1%	1.1%	0.1%	0.2%	-1.9%
	Percent of Original	93.7%	93.1%	101.2%	93.8%	92.8%	103.3%	92.2%	91.3%	101.8%	
	Change from prior year	-0.1%	0.3%	-2.0%	1.7%	1.6%	1.4%	-0.5%	-0.6%	-1.7%	
Median	Sale Price	130,500	124,950	269,900	125,000	118,000	254,930	115,000	105,000	238,270	
		Change from prior year	4.4%	5.9%	5.9%	8.7%	12.4%	7.0%	3.1%	0.0%	-10.9%
	List Price of Actives	130,000	119,900	249,987	135,000	124,900	261,025	129,900	121,900	224,338	
		Change from prior year	-3.7%	-4.0%	-4.2%	3.9%	2.5%	16.4%	N/A	N/A	N/A
	Days on Market	31	32	25	40	41	5	46	49	1	
		Change from prior year	-22.5%	-23.2%	455.6%	-13.0%	-16.3%	350.0%	-8.0%	-5.8%	0.0%
Percent of List		98.0%	97.8%	100.0%	97.9%	97.5%	100.2%	98.0%	97.4%	100.0%	
		Change from prior year	0.1%	0.4%	-0.2%	-0.1%	0.1%	0.2%	0.3%	0.1%	0.0%
Percent of Original		96.5%	96.0%	100.3%	95.5%	94.8%	100.2%	95.1%	94.3%	100.0%	
	Change from prior year	1.1%	1.3%	0.1%	0.4%	0.5%	0.2%	0.1%	0.1%	-0.1%	

YEAR-TO-DATE STATISTICS

SUMMARY >>

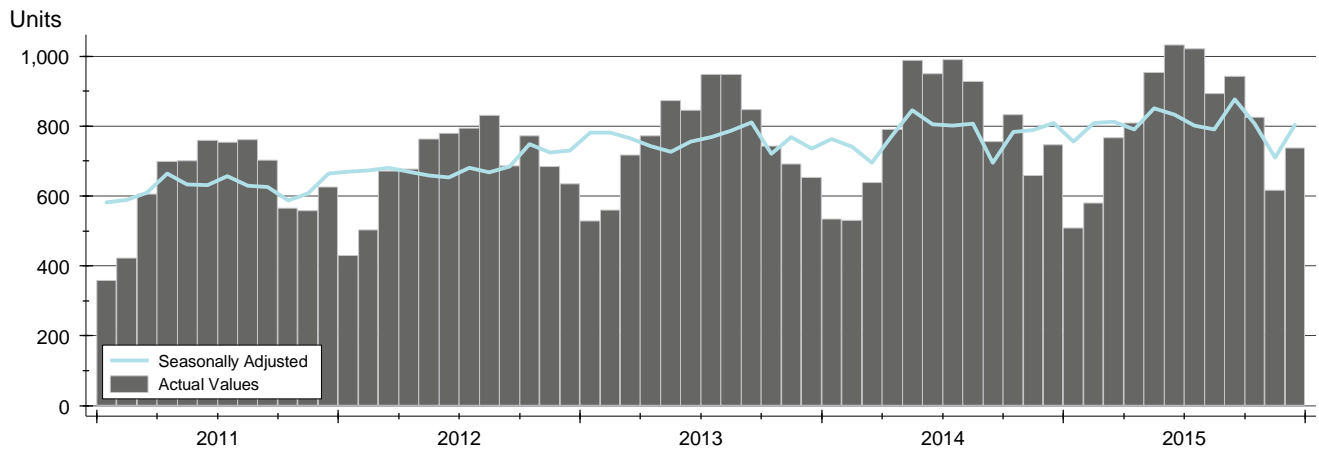
**ENTIRE MLS SYSTEM
YTD BREAKDOWNS BY HOME TYPE
AS OF 1/15/2016**

Year-to-Date Activity By Property Type		2015			2014			2013		
		Total	Existing	New	Total	Existing	New	Total	Existing	New
Home Sales		9,686	9,116	570	9,342	8,743	599	9,124	8,616	508
Change from prior year		3.7%	4.3%	-4.8%	2.4%	1.5%	17.9%	10.9%	10.2%	24.2%
New Listings		13,414	12,729	685	13,554	13,003	551	13,484	12,871	613
Change from prior year		-1.0%	-2.1%	24.3%	0.5%	1.0%	-10.1%	-0.5%	-1.6%	31.5%
Contracts Written		9,808	9,281	527	9,310	8,764	546	9,156	8,558	598
Change from prior year		5.3%	5.9%	-3.5%	1.7%	2.4%	-8.7%	9.4%	7.8%	39.4%
Sales Volume (1,000s)		1,457,886	1,292,482	165,404	1,356,474	1,178,737	177,737	1,268,649	1,129,521	139,127
Change from prior year		7.5%	9.6%	-6.9%	6.9%	4.4%	27.8%	17.4%	16.1%	29.0%
Average	Sale Price	150,515	141,782	290,183	145,202	134,821	296,724	139,045	131,096	273,873
	Change from prior year	3.7%	5.2%	-2.2%	4.4%	2.8%	8.3%	5.8%	5.3%	3.8%
	Days on Market	59	57	89	69	67	94	76	76	86
	Change from prior year	-14.1%	-14.7%	-5.3%	-10.1%	-11.8%	9.4%	-6.2%	-6.3%	-5.2%
Median	Percent of List	97.1%	96.7%	102.0%	96.8%	96.4%	102.0%	96.5%	96.2%	101.7%
	Change from prior year	0.3%	0.4%	-0.1%	0.3%	0.2%	0.3%	0.4%	0.4%	0.1%
	Percent of Original	94.5%	94.0%	102.4%	94.2%	93.6%	102.7%	93.4%	92.9%	102.4%
	Change from prior year	0.3%	0.4%	-0.3%	0.8%	0.8%	0.3%	1.0%	0.9%	0.2%
Median	Sale Price	130,000	125,000	249,950	123,450	117,500	252,000	119,900	114,000	237,750
	Change from prior year	5.3%	6.4%	-0.8%	3.0%	3.1%	6.0%	3.8%	3.5%	4.4%
	Days on Market	31	31	28	37	37	39	44	44	24
	Change from prior year	-16.2%	-16.2%	-28.2%	-15.9%	-15.9%	66.0%	-8.3%	-8.3%	-44.0%
Median	Percent of List	98.3%	98.1%	100.0%	98.0%	97.7%	100.0%	97.8%	97.5%	100.0%
	Change from prior year	0.3%	0.4%	0.0%	0.2%	0.2%	0.0%	0.4%	0.4%	0.0%
	Percent of Original	96.9%	96.5%	100.4%	96.3%	95.9%	100.6%	95.9%	95.5%	100.7%
	Change from prior year	0.6%	0.6%	-0.1%	0.5%	0.5%	-0.1%	0.8%	0.9%	0.7%

SOLD LISTINGS ANALYSIS

HISTORY >>

ENTIRE MLS SYSTEM
ALL HOMES
AS OF 1/15/2016



SUMMARY >>

Summary Statistics for Sold Listings		December			Year-to-Date		
		2015	2014	Change	2015	2014	Change
Sold Listings		737	746	-1.2%	9,686	9,342	3.7%
Volume (1,000s)		109,405	107,648	1.6%	1,457,886	1,356,474	7.5%
Average	Sale Price	148,447	144,300	2.9%	150,515	145,202	3.7%
	Days on Market	57	69	-17.6%	59	69	-14.1%
	Percent of List	96.6%	96.6%	0.0%	97.1%	96.8%	0.3%
	Percent of Original	93.7%	93.8%	-0.1%	94.5%	94.2%	0.3%
Median	Sale Price	130,500	125,000	4.4%	130,000	123,450	5.3%
	Days on Market	31	40	-22.5%	31	37	-16.2%
	Percent of List	98.0%	97.9%	0.1%	98.3%	98.0%	0.3%
	Percent of Original	96.5%	95.5%	1.1%	96.9%	96.3%	0.6%

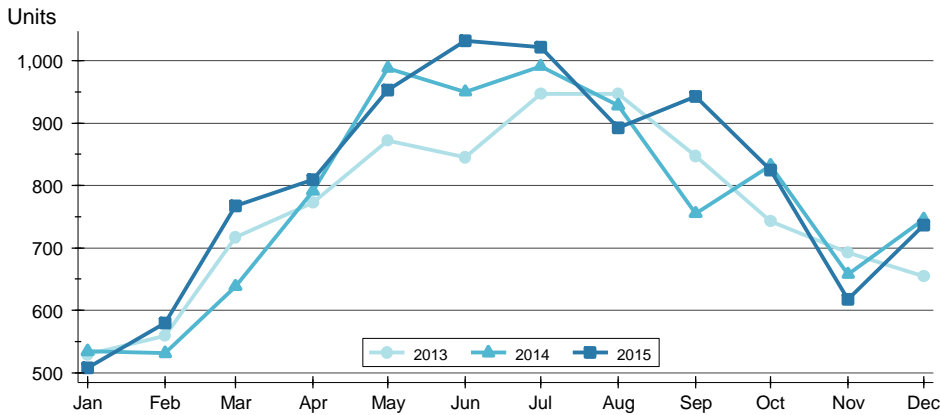
A total of 737 homes sold in South Central Kansas in December, down from 746 units in December 2014. Total sales volume rose to \$109.4 million compared to \$107.6 million in the previous year.

The median sales price in December was \$130,500, up 4.4% compared to the prior year. Median days on market was 31 days, down from 32 days in November, and down from 40 in December 2014.

SOLD LISTINGS ANALYSIS

BY MONTH »

**ENTIRE MLS SYSTEM
ALL HOMES
AS OF 1/15/2016**



Month	2013	2014	2015
January	529	534	508
February	559	531	580
March	717	638	767
April	772	791	809
May	872	988	953
June	845	950	1,032
July	947	991	1,022
August	947	928	893
September	847	755	943
October	743	832	825
November	692	658	617
December	654	746	737

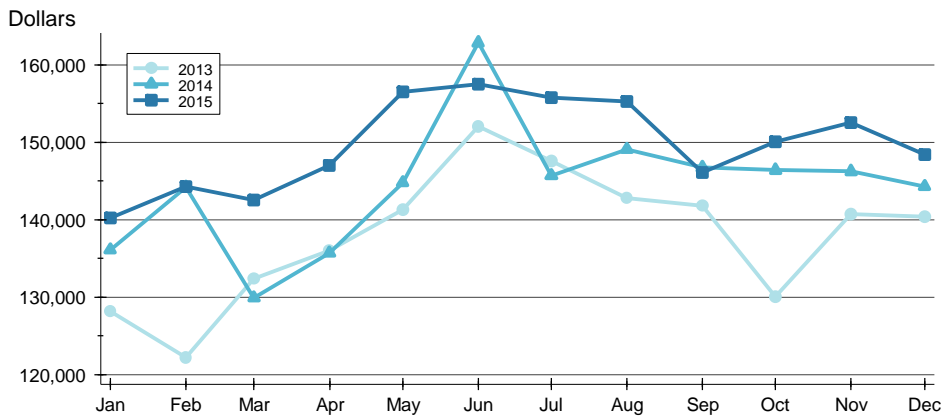
BY PRICE RANGE »

Price Range	Sales			Sale Price		Days on Market		Price as % of List		Price as % of Orig.	
	Number	Percent	Volume	Average	Median	Average	Median	Average	Median	Average	Median
Below \$25,000	25	3.4%	417	16,675	18,565	66	45	75.0%	75.8%	62.4%	68.8%
\$25,000-\$49,999	77	10.4%	2,892	37,553	38,000	62	37	93.1%	94.4%	85.6%	87.5%
\$50,000-\$99,999	157	21.3%	11,905	75,830	77,000	49	29	96.6%	96.9%	93.4%	95.5%
\$100,000-\$124,999	84	11.4%	9,483	112,892	113,500	59	35	96.6%	97.2%	94.5%	95.6%
\$125,000-\$149,999	99	13.4%	13,526	136,629	136,000	50	26	98.0%	98.9%	95.5%	97.6%
\$150,000-\$174,999	71	9.6%	11,527	162,352	162,500	46	24	97.9%	98.3%	96.0%	97.0%
\$175,000-\$199,999	66	9.0%	12,202	184,886	183,750	51	30	98.6%	99.2%	97.0%	97.8%
\$200,000-\$249,999	61	8.3%	13,785	225,986	225,000	53	25	98.1%	98.1%	96.7%	97.0%
\$250,000-\$299,999	45	6.1%	12,138	269,732	267,000	64	28	97.4%	97.6%	96.0%	96.2%
\$300,000 and up	52	7.1%	21,530	414,031	351,550	99	45	98.3%	99.1%	96.6%	98.6%
All price ranges	737	100.0%	109,405	148,447	130,500	57	31	96.6%	98.0%	93.7%	96.5%

SOLD LISTINGS ANALYSIS

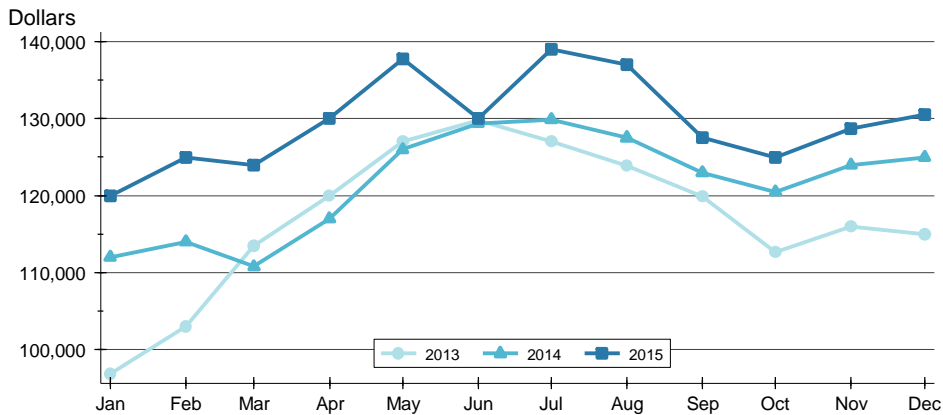
ENTIRE MLS SYSTEM
ALL HOMES
AS OF 1/15/2016

AVERAGE PRICE >>



Month	2013	2014	2015
January	128,141	136,123	140,224
February	122,182	144,192	144,271
March	132,357	129,893	142,575
April	135,999	135,690	146,976
May	141,341	144,809	156,545
June	152,058	162,882	157,514
July	147,613	145,715	155,784
August	142,764	149,074	155,285
September	141,798	146,735	146,058
October	130,076	146,228	152,588
November	140,713	144,300	148,447
December	140,403	144,300	148,447

MEDIAN PRICE >>

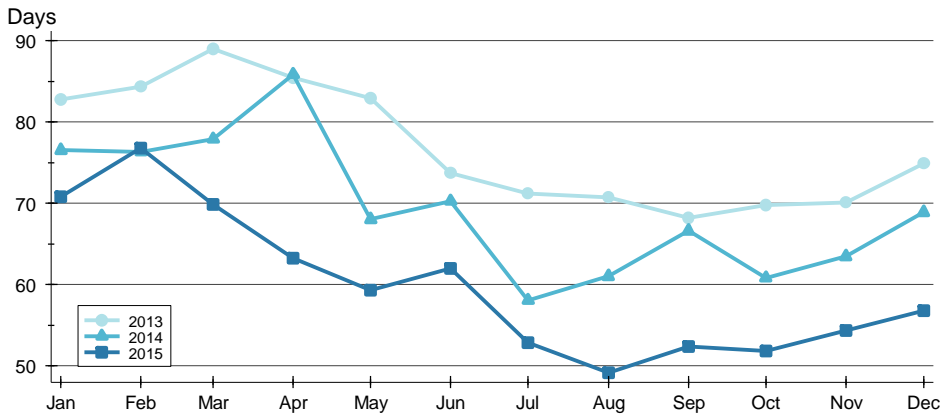


Month	2013	2014	2015
January	96,900	112,000	120,000
February	103,000	114,000	125,000
March	113,500	110,785	124,000
April	120,000	117,000	130,000
May	127,000	126,000	137,800
June	129,790	129,400	130,000
July	127,000	129,900	139,000
August	123,900	127,500	137,000
September	119,900	123,000	127,500
October	112,650	120,500	125,000
November	116,000	124,000	128,700
December	115,000	125,000	130,500

SOLD LISTINGS ANALYSIS

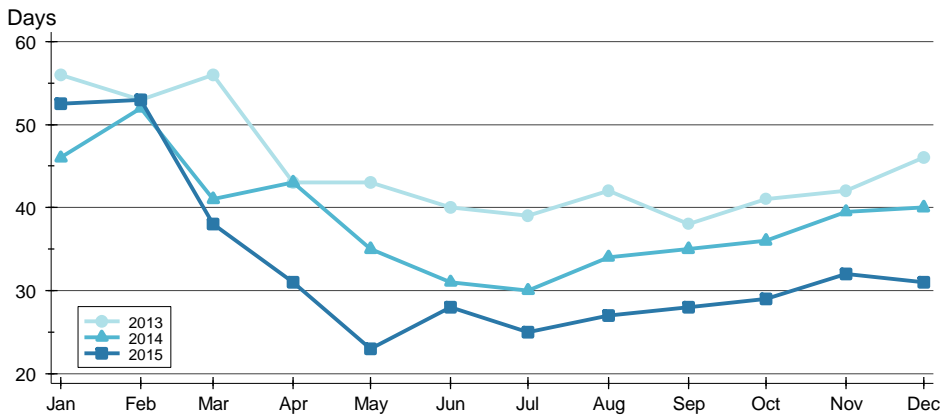
ENTIRE MLS SYSTEM
ALL HOMES
AS OF 1/15/2016

AVERAGE DOM >>



Month	2013	2014	2015
January	83	77	71
February	84	76	77
March	89	78	70
April	85	86	63
May	83	68	59
June	74	70	62
July	71	58	53
August	71	61	49
September	68	67	52
October	70	61	52
November	70	63	54
December	75	69	57

MEDIAN DOM >>

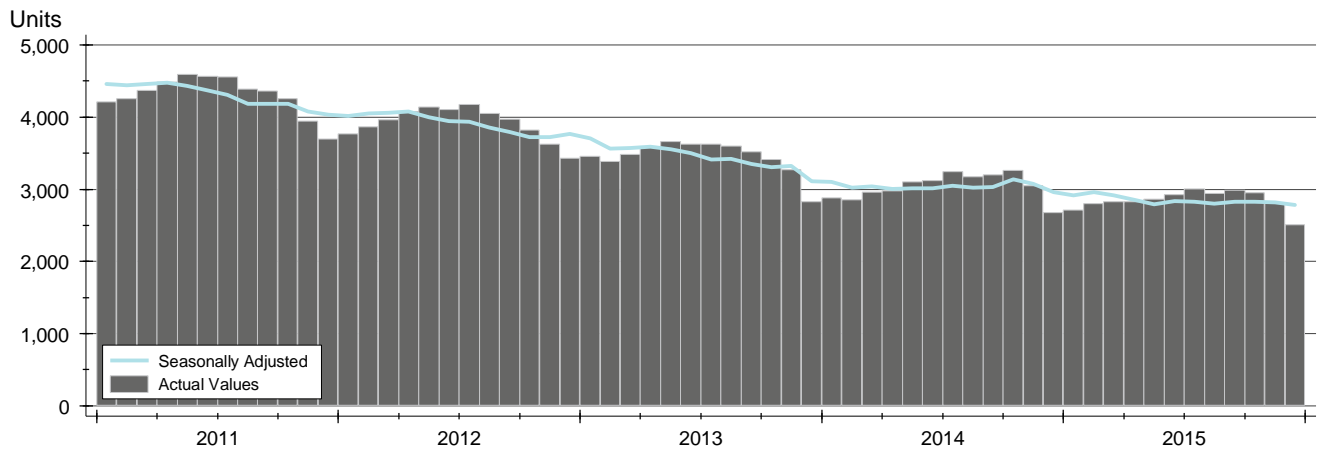


Month	2013	2014	2015
January	56	46	53
February	53	52	53
March	56	41	38
April	43	43	31
May	43	35	23
June	40	31	28
July	39	30	25
August	42	34	27
September	38	35	28
October	41	36	29
November	42	40	32
December	46	40	31

ACTIVE LISTINGS ANALYSIS

HISTORY >>

ENTIRE MLS SYSTEM
ALL HOMES
AS OF 1/15/2016



SUMMARY >>

Summary Statistics for Active Listings		End of December		
		2015	2014	Change
Active Listings		2,512	2,680	-6.3%
Months' Supply		3.4	3.6	-5.1%
Volume (1,000s)		497,803	503,793	-1.2%
Average	List Price	198,170	187,982	5.4%
	Days on Market	120	109	9.4%
	Percent of Original	97.1%	97.6%	-0.5%
Median	List Price	130,000	135,000	-3.7%
	Days on Market	84	80	5.0%
	Percent of Original	100.0%	100.0%	0.0%

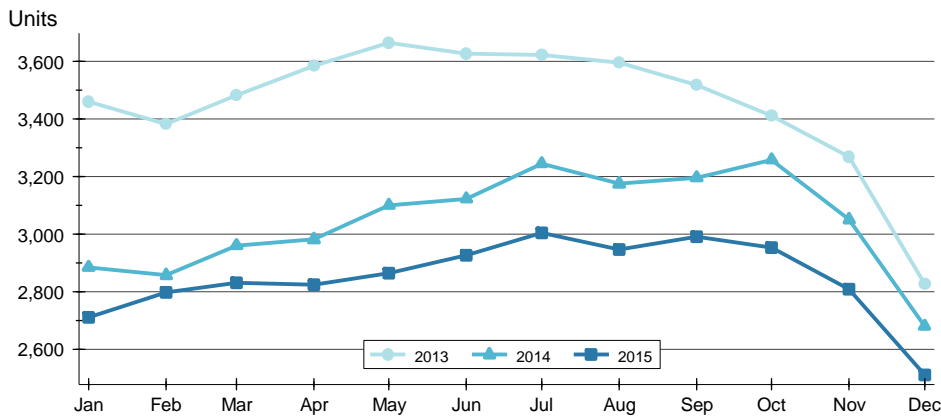
A total of 2,512 homes were available for sale in South Central Kansas at the end of December. This represents a 3.4 months' supply of active listings.

The median list price of homes on the market at the end of December was \$130,000, down 3.7% from 2014. The typical time on market for active listings was 84 days, up from 80 days a year earlier.

ACTIVE LISTINGS ANALYSIS

BY MONTH >>

ENTIRE MLS SYSTEM
ALL HOMES
AS OF 1/15/2016



Month	2013	2014	2015
January	3,461	2,885	2,710
February	3,382	2,857	2,798
March	3,483	2,961	2,831
April	3,586	2,982	2,825
May	3,665	3,101	2,864
June	3,628	3,123	2,926
July	3,624	3,245	3,004
August	3,597	3,175	2,946
September	3,519	3,196	2,991
October	3,411	3,259	2,954
November	3,270	3,051	2,808
December	2,827	2,680	2,512

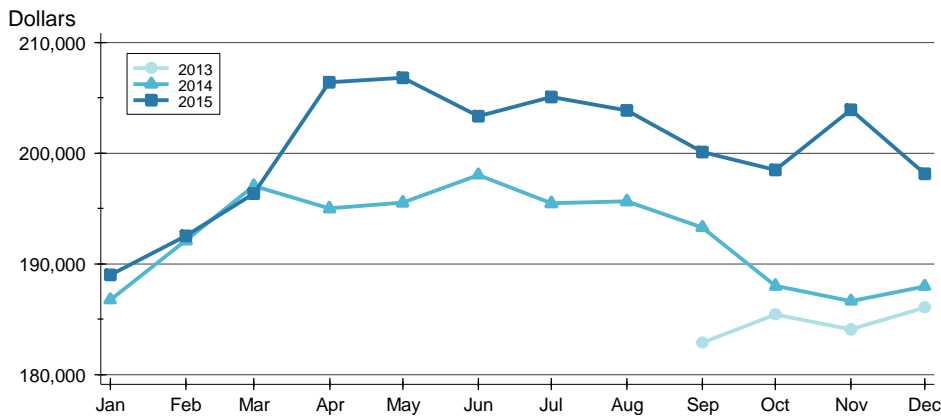
BY PRICE RANGE >>

Price Range	Active Listings			Months' Supply	List Price		Days on Market		List as % Orig.	
	Number	Percent	Volume		Average	Median	Average	Median	Average	Median
Below \$25,000	66	2.6%	827	2.6	12,535	14,400	108	58	91.1%	100.0%
\$25,000-\$49,999	211	8.4%	8,399	2.7	39,804	40,000	103	78	94.0%	100.0%
\$50,000-\$99,999	724	28.8%	52,995	4.6	73,197	70,000	107	77	96.7%	100.0%
\$100,000-\$124,999	179	7.1%	20,346	2.1	113,663	114,900	100	71	97.2%	100.0%
\$125,000-\$149,999	216	8.6%	29,594	2.2	137,010	137,000	97	71	97.2%	100.0%
\$150,000-\$174,999	137	5.5%	22,267	1.9	162,536	160,000	108	84	97.5%	100.0%
\$175,000-\$199,999	158	6.3%	29,799	2.4	188,602	189,000	112	74	98.8%	100.0%
\$200,000-\$249,999	224	8.9%	50,802	3.7	226,795	226,100	124	92	98.9%	100.0%
\$250,000-\$299,999	174	6.9%	47,713	3.9	274,211	274,900	143	92	98.1%	100.0%
\$300,000 and up	406	16.2%	231,692	7.8	570,670	432,366	172	129	98.3%	100.0%
All price ranges	2,512	100.0%	497,803	3.4	198,170	130,000	120	84	97.1%	100.0%

ACTIVE LISTINGS ANALYSIS

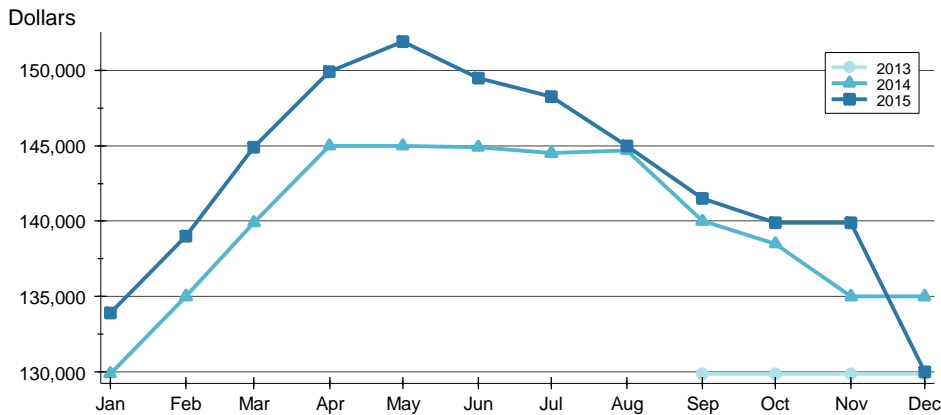
ENTIRE MLS SYSTEM
ALL HOMES
AS OF 1/15/2016

AVERAGE PRICE >>



Month	2013	2014	2015
January	N/A	186,754	188,970
February	N/A	192,103	192,547
March	N/A	197,034	196,355
April	N/A	194,992	206,422
May	N/A	195,523	206,806
June	N/A	198,032	203,356
July	N/A	195,462	205,102
August	N/A	195,631	203,861
September	182,882	193,291	200,121
October	185,385	188,003	198,492
November	184,051	186,628	203,927
December	186,034	187,982	198,170

MEDIAN PRICE >>

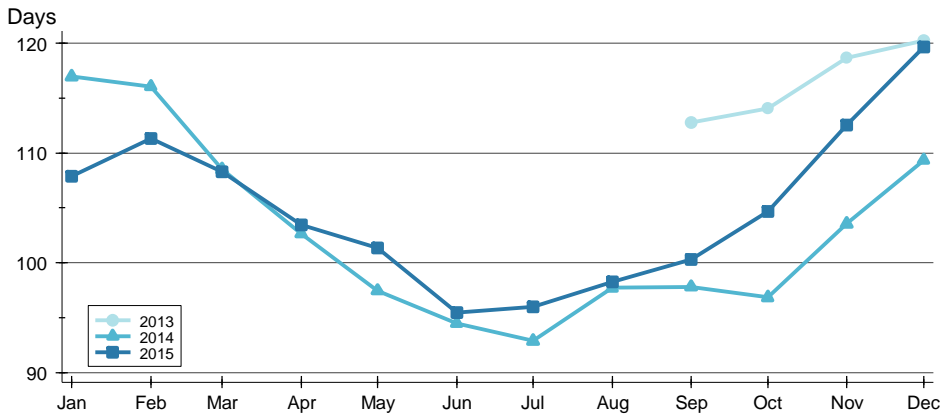


Month	2013	2014	2015
January	N/A	129,900	133,900
February	N/A	135,000	139,000
March	N/A	139,900	144,900
April	N/A	145,000	149,900
May	N/A	145,000	151,900
June	N/A	144,900	149,500
July	N/A	144,500	148,250
August	N/A	144,700	145,000
September	129,900	140,000	141,500
October	129,900	138,500	139,900
November	129,900	135,000	139,900
December	129,900	135,000	130,000

ACTIVE LISTINGS ANALYSIS

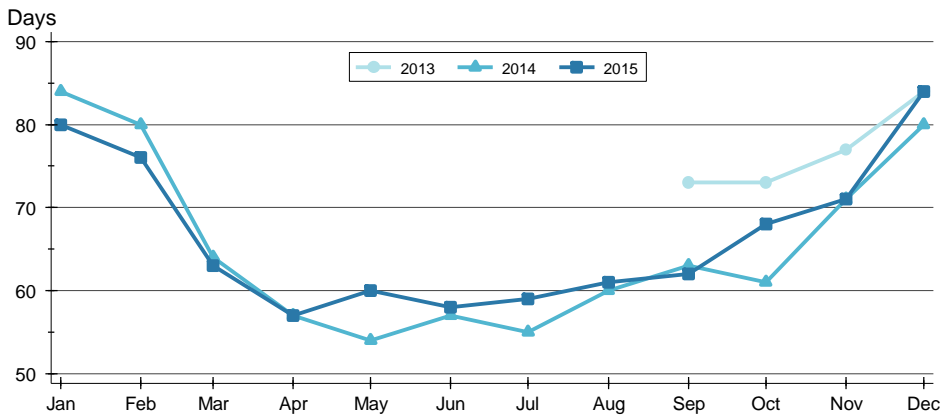
ENTIRE MLS SYSTEM
ALL HOMES
AS OF 1/15/2016

AVERAGE DOM >>



Month	2013	2014	2015
January	N/A	117	108
February	N/A	116	111
March	N/A	109	108
April	N/A	103	103
May	N/A	97	101
June	N/A	94	95
July	N/A	93	96
August	N/A	98	98
September	113	98	100
October	114	97	105
November	119	104	113
December	120	109	120

MEDIAN DOM >>

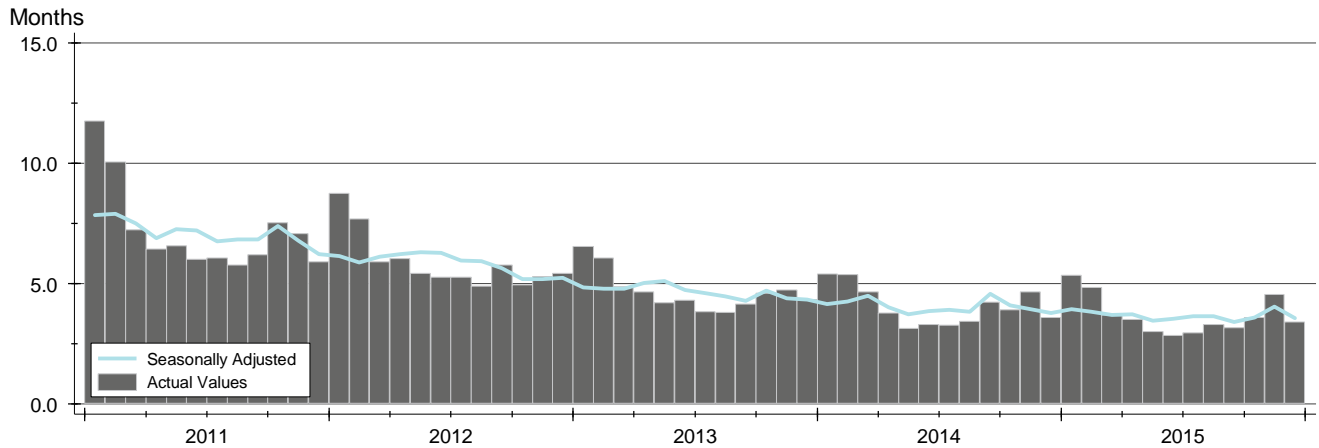


Month	2013	2014	2015
January	N/A	84	80
February	N/A	80	76
March	N/A	64	63
April	N/A	57	57
May	N/A	54	60
June	N/A	57	58
July	N/A	55	59
August	N/A	60	61
September	73	63	62
October	73	61	68
November	77	71	71
December	84	80	84

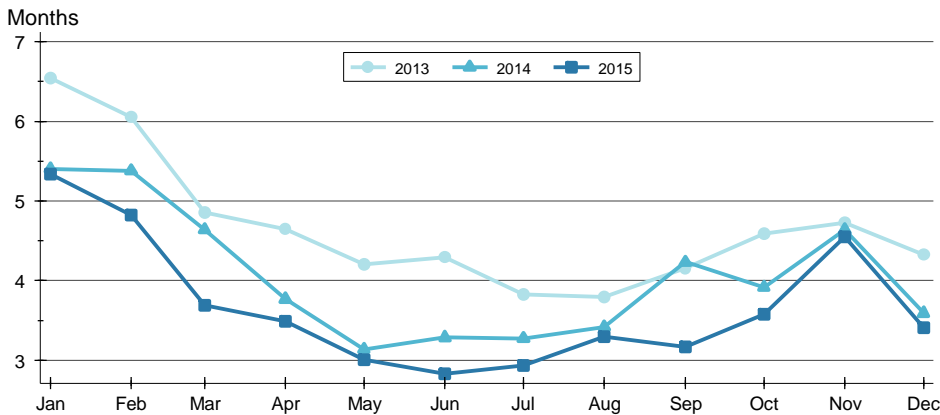
MONTHS' SUPPLY ANALYSIS

HISTORY >>

ENTIRE MLS SYSTEM
ALL HOMES
AS OF 1/15/2016



BY MONTH >>

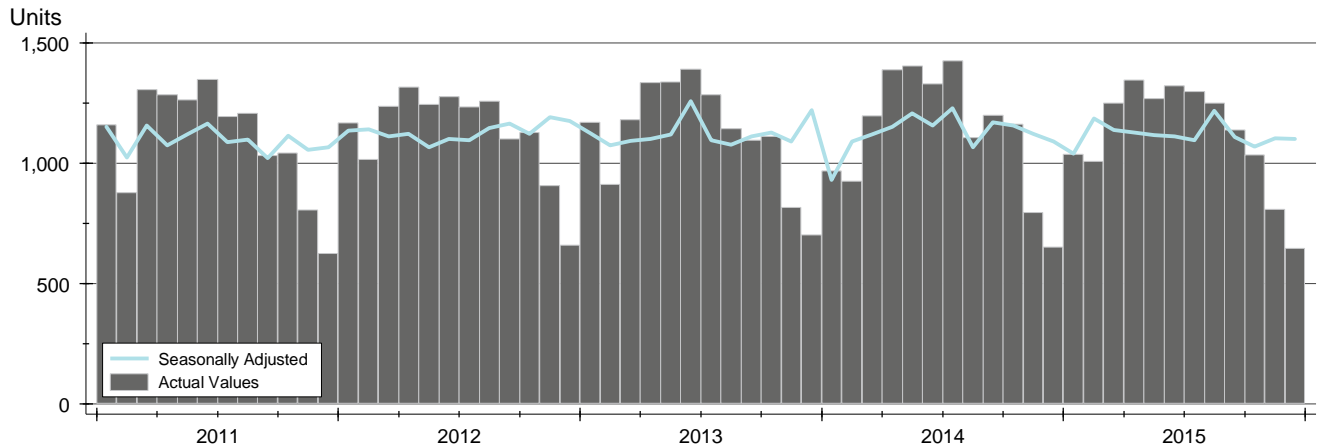


Month	2013	2014	2015
January	6.5	5.4	5.3
February	6.1	5.4	4.8
March	4.9	4.6	3.7
April	4.6	3.8	3.5
May	4.2	3.1	3.0
June	4.3	3.3	2.8
July	3.8	3.3	2.9
August	3.8	3.4	3.3
September	4.2	4.2	3.2
October	4.6	3.9	3.6
November	4.7	4.6	4.6
December	4.3	3.6	3.4

NEW LISTINGS ANALYSIS

HISTORY >>

ENTIRE MLS SYSTEM
ALL HOMES
AS OF 1/15/2016



SUMMARY >>

Summary Statistics for New Listings		December		
		2015	2014	Change
Current Month	New Listings	646	650	-0.6%
	Volume (1,000s)	93,749	99,014	-5.3%
	Average List Price	145,122	152,329	-4.7%
	Median List Price	112,100	124,900	-10.2%
YTD	New Listings	13,414	13,554	-1.0%
	Volume (1,000s)	2,233,498	2,146,695	4.0%
	Average List Price	166,505	158,381	5.1%
	Median List Price	134,900	129,900	3.8%

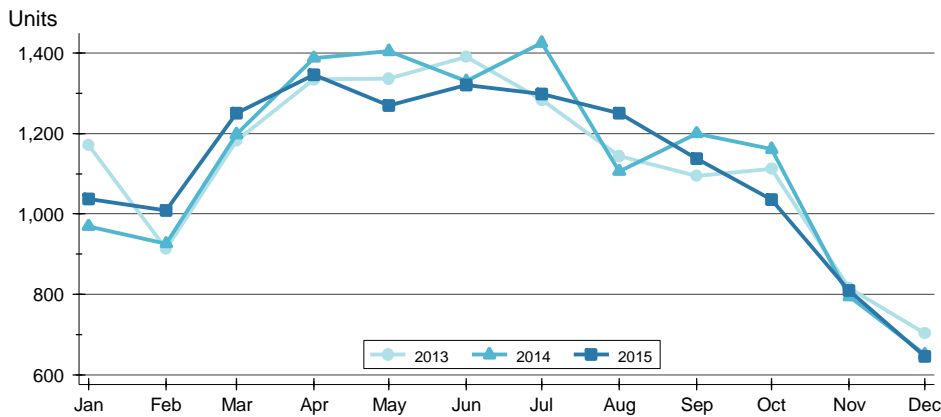
A total of 646 new listings were added in South Central Kansas during December, down 0.6% from the same month in 2014. Year-to-date South Central Kansas has seen 13,414 new listings.

The median list price of these homes was \$112,100 down from \$124,900 in 2014.

NEW LISTINGS ANALYSIS

BY MONTH >>

ENTIRE MLS SYSTEM
ALL HOMES
AS OF 1/15/2016



Month	2013	2014	2015
January	1,171	969	1,038
February	913	926	1,009
March	1,182	1,198	1,251
April	1,335	1,388	1,347
May	1,337	1,405	1,270
June	1,391	1,330	1,321
July	1,284	1,426	1,299
August	1,144	1,106	1,251
September	1,095	1,200	1,138
October	1,113	1,161	1,035
November	816	795	809
December	703	650	646

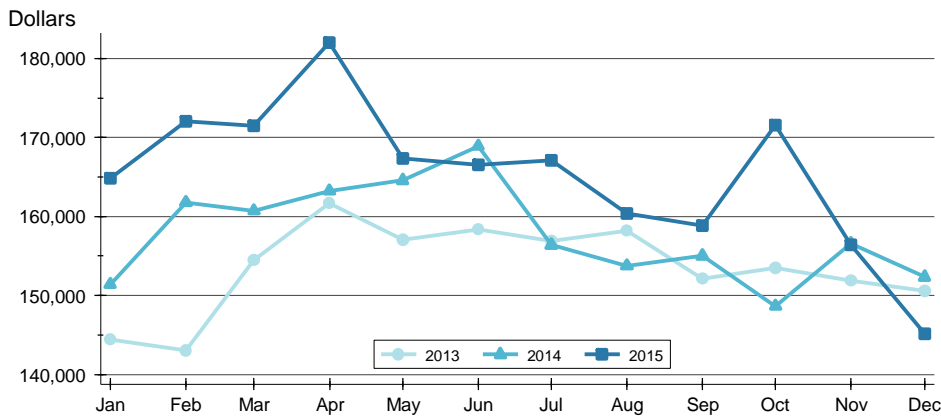
BY PRICE RANGE >>

Price Range	New Listings			List Price	
	Number	Percent	Volume	Average	Median
Below \$25,000	31	4.8%	464	14,974	17,600
\$25,000-\$49,999	81	12.5%	3,211	39,638	40,000
\$50,000-\$99,999	184	28.5%	13,557	73,679	73,950
\$100,000-\$124,999	51	7.9%	5,865	114,997	115,000
\$125,000-\$149,999	76	11.8%	10,489	138,009	139,900
\$150,000-\$174,999	43	6.7%	7,003	162,850	164,900
\$175,000-\$199,999	42	6.5%	7,880	187,622	185,000
\$200,000-\$249,999	41	6.3%	9,192	224,196	223,500
\$250,000-\$299,999	30	4.6%	8,237	274,556	273,675
\$300,000 and up	49	7.6%	25,240	515,095	360,000
All price ranges	646	100.0%	93,749	145,122	112,100

NEW LISTINGS ANALYSIS

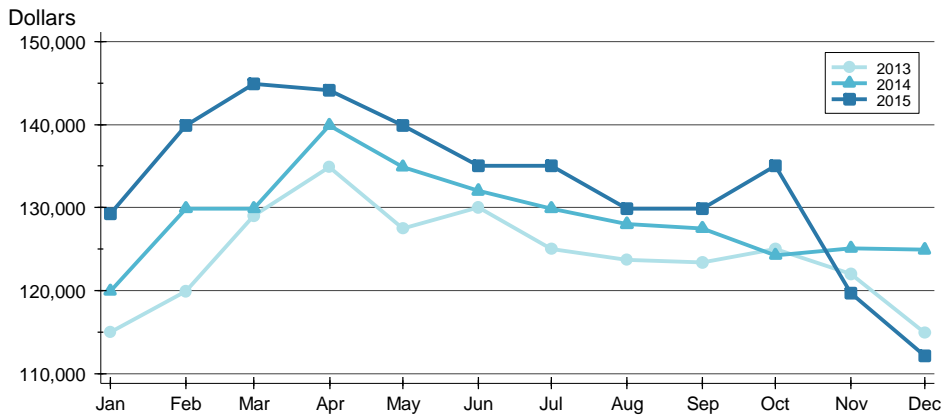
ENTIRE MLS SYSTEM
ALL HOMES
AS OF 1/15/2016

AVERAGE PRICE >>



Month	2013	2014	2015
January	144,380	151,420	164,839
February	143,028	161,774	172,048
March	154,465	160,744	171,511
April	161,691	163,252	182,015
May	157,087	164,562	167,312
June	158,320	168,911	166,532
July	156,863	156,405	167,105
August	158,186	153,761	160,369
September	152,097	155,014	158,810
October	153,482	148,667	171,606
November	151,854	156,569	156,404
December	150,599	152,329	145,122

MEDIAN PRICE >>

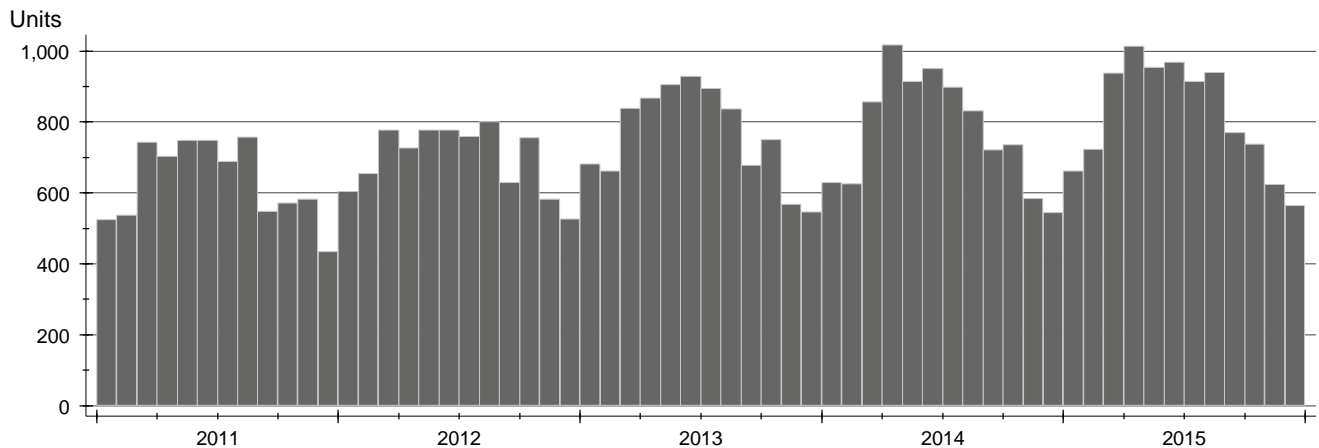


Month	2013	2014	2015
January	115,000	119,950	129,250
February	119,950	129,900	139,900
March	129,000	129,900	144,900
April	134,900	139,900	144,125
May	127,500	134,900	139,900
June	130,000	132,000	135,000
July	125,000	129,900	135,000
August	123,700	128,000	129,900
September	123,350	127,500	129,900
October	125,000	124,250	135,000
November	122,000	125,080	119,700
December	114,900	124,900	112,100

CONTRACTS WRITTEN ANALYSIS

HISTORY >>

ENTIRE MLS SYSTEM
ALL HOMES
AS OF 1/15/2016



SUMMARY >>

Summary Statistics for Contracts Written		December			Year-to-Date		
		2015	2014	Change	2015	2014	Change
Contracts Written		564	545	3.5%	9,808	9,310	5.3%
Volume (1,000s)		83,414	77,385	7.8%	1,548,170	1,417,134	9.2%
Average	List Price	147,898	141,991	4.2%	157,848	152,216	3.7%
	Days on Market	66	67	-1.5%	59	68	-13.1%
	Percent of Original	94.5%	92.6%	2.0%	94.6%	94.2%	0.5%
Median	List Price	124,900	121,400	2.9%	135,000	129,900	3.9%
	Days on Market	43	46	-6.5%	31	38	-18.4%
	Percent of Original	100.0%	95.0%	5.3%	97.1%	96.3%	0.8%

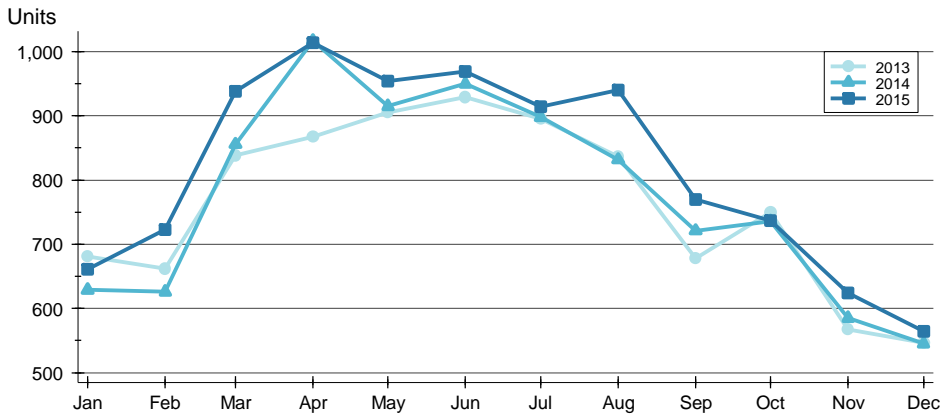
A total of 564 contracts for sale were written in South Central Kansas during the month of December, up from 545 in 2014. The median list price of these homes was \$124,900, up from \$121,400 the prior year.

Half of the homes that went under contract in December were on the market less than 43 days, compared to 46 days in December 2014.

CONTRACTS WRITTEN ANALYSIS

BY MONTH >>

ENTIRE MLS SYSTEM
ALL HOMES
AS OF 1/15/2016



Month	2013	2014	2015
January	681	629	661
February	662	626	723
March	839	856	938
April	867	1,017	1,014
May	905	915	954
June	929	950	969
July	895	898	914
August	837	832	940
September	678	721	770
October	750	736	737
November	567	585	624
December	546	545	564

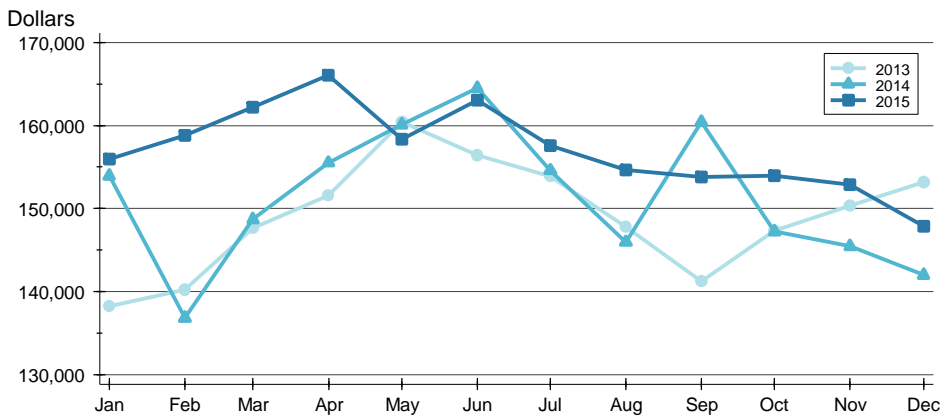
BY PRICE RANGE >>

Price Range	Contracts Written			List Price		Days on Market		List as % Orig.	
	Number	Percent	Volume	Average	Median	Average	Median	Average	Median
Below \$25,000	11	2.0%	174	15,773	13,000	52	61	64.3%	54.3%
\$25,000-\$49,999	59	10.5%	2,257	38,261	39,000	57	36	86.1%	89.7%
\$50,000-\$99,999	141	25.0%	10,618	75,308	78,000	72	47	94.3%	97.6%
\$100,000-\$124,999	50	8.9%	5,736	114,712	115,000	59	38	96.3%	100.0%
\$125,000-\$149,999	59	10.5%	8,118	137,590	137,000	48	36	96.6%	100.0%
\$150,000-\$174,999	53	9.4%	8,603	162,321	164,900	58	38	97.7%	100.0%
\$175,000-\$199,999	36	6.4%	6,755	187,649	188,250	62	46	96.5%	100.0%
\$200,000-\$249,999	44	7.8%	9,868	224,262	224,900	79	59	98.2%	100.0%
\$250,000-\$299,999	20	3.5%	5,422	271,116	269,900	95	70	97.4%	99.6%
\$300,000 and up	40	7.1%	18,321	458,016	397,450	120	76	98.5%	100.0%
All price ranges	564	100.0%	83,414	147,898	124,900	66	43	94.5%	100.0%

CONTRACTS WRITTEN ANALYSIS

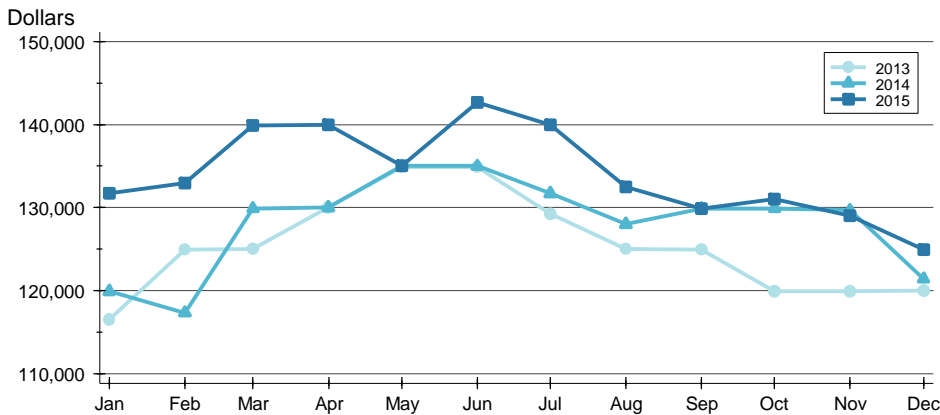
ENTIRE MLS SYSTEM
ALL HOMES
AS OF 1/15/2016

AVERAGE PRICE >>



Month	2013	2014	2015
January	138,227	153,926	155,975
February	140,227	136,796	158,841
March	147,646	148,693	162,242
April	151,564	155,505	166,045
May	160,431	160,105	158,345
June	156,435	164,515	163,054
July	153,882	154,571	157,600
August	147,779	145,938	154,617
September	141,208	160,429	153,837
October	147,349	147,212	153,986
November	150,340	145,455	152,876
December	153,149	141,991	147,898

MEDIAN PRICE >>

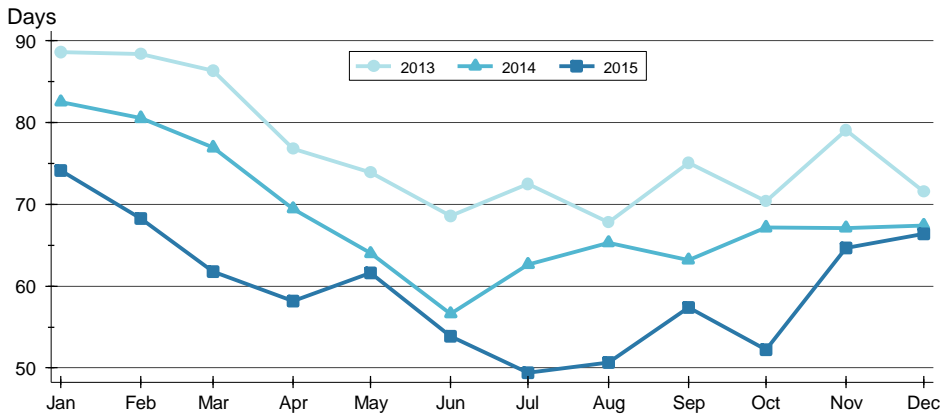


Month	2013	2014	2015
January	116,500	119,900	131,750
February	124,900	117,315	132,950
March	125,000	129,900	139,900
April	130,000	130,000	140,000
May	134,900	135,000	135,000
June	134,900	135,000	142,700
July	129,250	131,700	139,950
August	125,000	128,000	132,500
September	124,900	129,900	129,900
October	119,900	129,900	131,000
November	119,900	129,675	129,000
December	120,000	121,400	124,900

CONTRACTS WRITTEN ANALYSIS

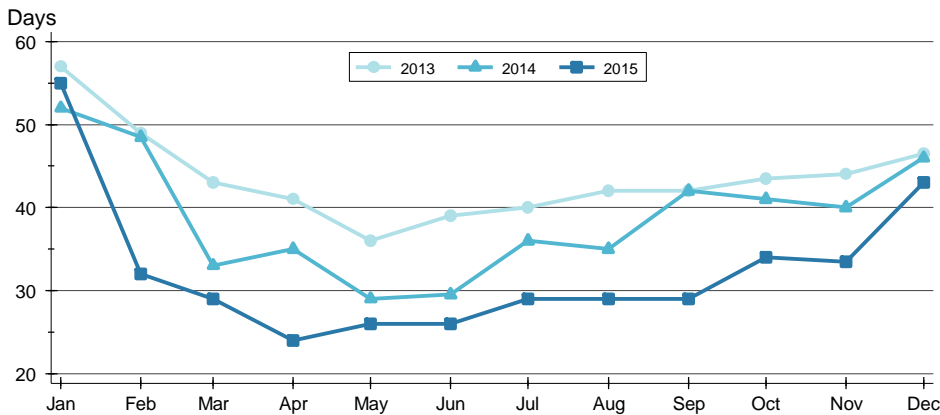
**ENTIRE MLS SYSTEM
ALL HOMES
AS OF 1/15/2016**

AVERAGE DOM »



Month	2013	2014	2015
January	89	83	74
February	88	81	68
March	86	77	62
April	77	69	58
May	74	64	62
June	69	57	54
July	73	63	49
August	68	65	51
September	75	63	57
October	70	67	52
November	79	67	65
December	72	67	66

MEDIAN DOM »

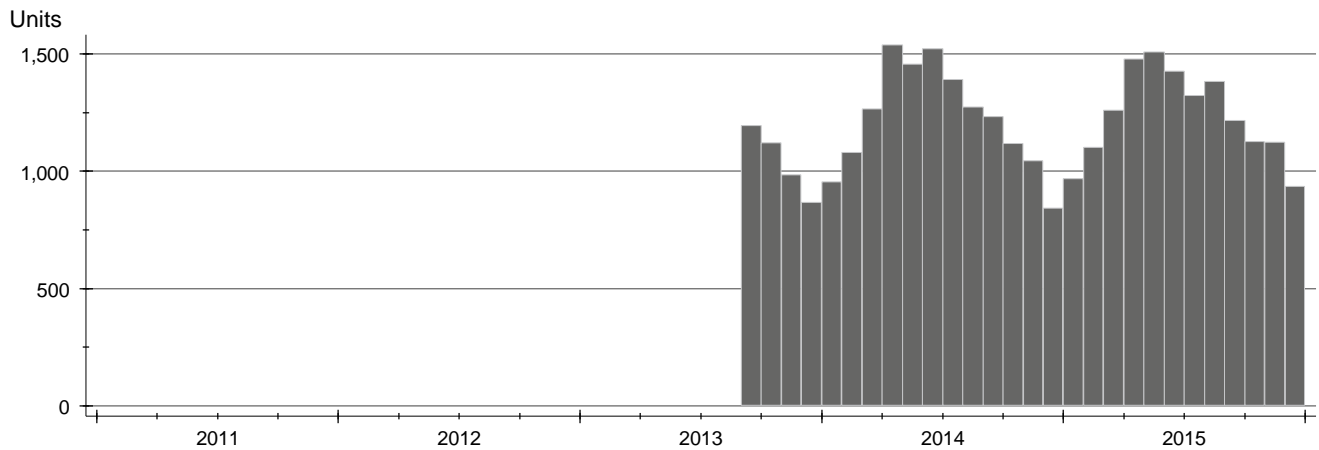


Month	2013	2014	2015
January	57	52	55
February	49	49	32
March	43	33	29
April	41	35	24
May	36	29	26
June	39	30	26
July	40	36	29
August	42	35	29
September	42	42	29
October	44	41	34
November	44	40	34
December	47	46	43

PENDING CONTRACTS ANALYSIS

HISTORY >>

ENTIRE MLS SYSTEM
ALL HOMES
AS OF 1/15/2016



SUMMARY >>

Summary Statistics for Pending Contracts		End of December		
		2015	2014	Change
Pending Contracts		937	842	11.3%
Volume (1,000s)		156,241	129,861	20.3%
Average	List Price	166,746	154,229	8.1%
	Days on Market	67	82	-18.5%
	Percent of Original	96.7%	96.4%	0.4%
Median	List Price	134,500	129,950	3.5%
	Days on Market	38	52	-26.9%
	Percent of Original	100.0%	100.0%	0.0%

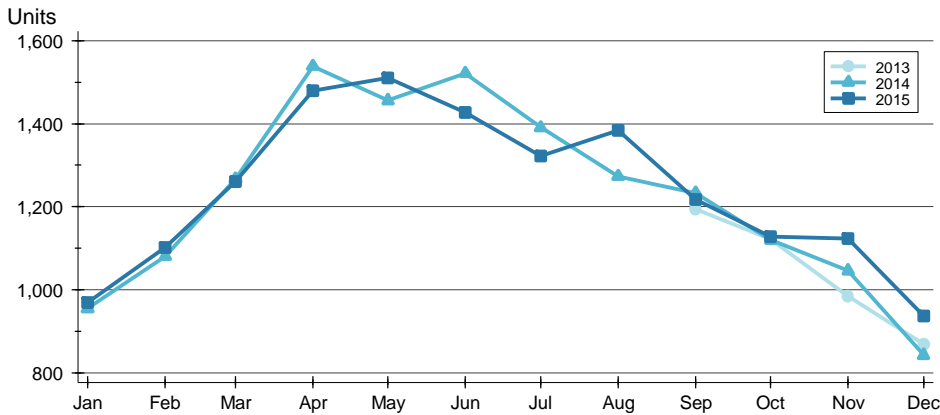
A total of 937 listings in South Central Kansas had contracts pending at the end of December, up from 842 contracts pending at the end of December 2014.

Pending contracts reflect listings with a contract in place at the end of the month. In contrast, contracts written measures the number of listings put under contract during the month.

PENDING CONTRACTS ANALYSIS

BY MONTH >>

ENTIRE MLS SYSTEM
ALL HOMES
AS OF 1/15/2016



Month	2013	2014	2015
January		955	969
February		1,080	1,101
March		1,267	1,261
April		1,539	1,480
May		1,456	1,510
June		1,522	1,427
July		1,391	1,323
August		1,273	1,384
September	1,195	1,233	1,217
October	1,121	1,120	1,128
November	985	1,046	1,123
December	868	842	937

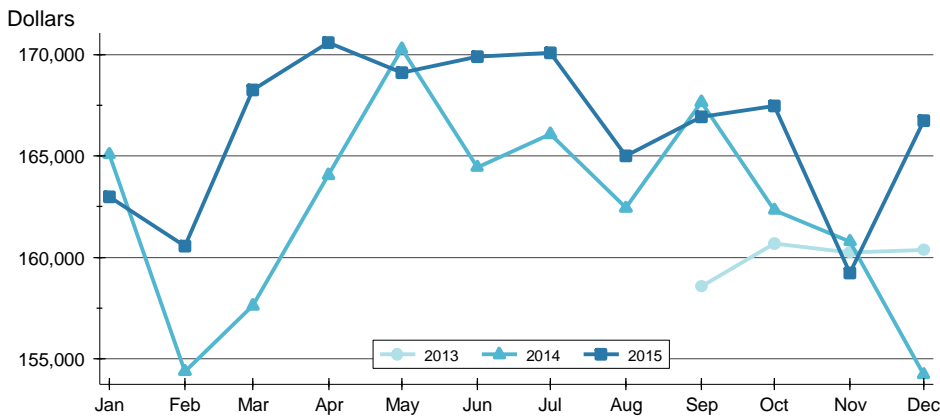
BY PRICE RANGE >>

Price Range	Contracts Pending			List Price		Days on Market		List as % Orig.	
	Number	Percent	Volume	Average	Median	Average	Median	Average	Median
Below \$25,000	11	1.2%	180	16,318	19,000	56	66	83.1%	100.0%
\$25,000-\$49,999	66	7.0%	2,618	39,660	40,950	70	50	89.9%	100.0%
\$50,000-\$99,999	242	25.8%	18,810	77,727	79,900	70	46	95.8%	100.0%
\$100,000-\$124,999	91	9.7%	10,476	115,125	115,000	53	30	98.2%	100.0%
\$125,000-\$149,999	104	11.1%	14,287	137,370	136,500	50	34	98.2%	100.0%
\$150,000-\$174,999	96	10.2%	15,604	162,539	163,000	64	33	98.2%	100.0%
\$175,000-\$199,999	71	7.6%	13,307	187,427	188,200	62	31	97.6%	100.0%
\$200,000-\$249,999	74	7.9%	16,440	222,159	220,000	66	42	98.5%	100.0%
\$250,000-\$299,999	56	6.0%	15,078	269,253	266,250	71	48	98.5%	100.0%
\$300,000 and up	84	9.0%	42,439	505,221	399,900	111	37	98.4%	100.0%
All price ranges	937	100.0%	156,241	166,746	134,500	67	38	96.7%	100.0%

PENDING CONTRACTS ANALYSIS

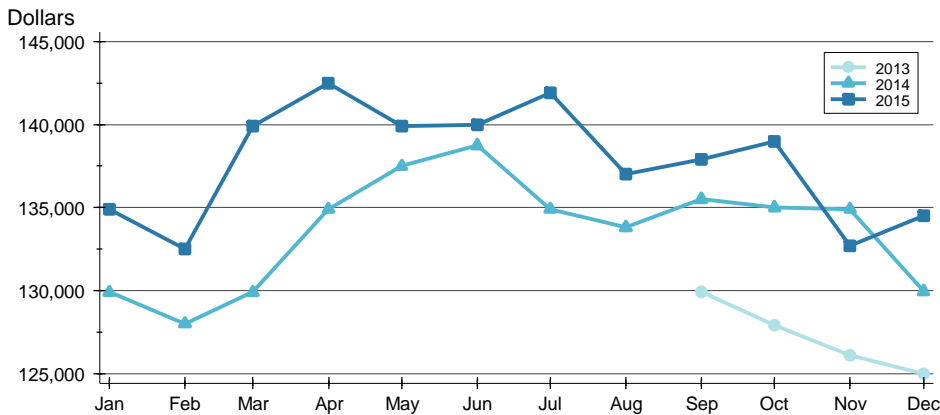
ENTIRE MLS SYSTEM
ALL HOMES
AS OF 1/15/2016

AVERAGE PRICE >>



Month	2013	2014	2015
January	N/A	165,083	162,993
February	N/A	154,377	160,550
March	N/A	157,614	168,272
April	N/A	164,050	170,592
May	N/A	170,276	169,126
June	N/A	164,441	169,887
July	N/A	166,067	170,100
August	N/A	162,437	164,997
September	158,561	167,647	166,919
October	160,673	162,333	167,456
November	160,249	160,785	159,226
December	160,381	154,229	166,746

MEDIAN PRICE >>

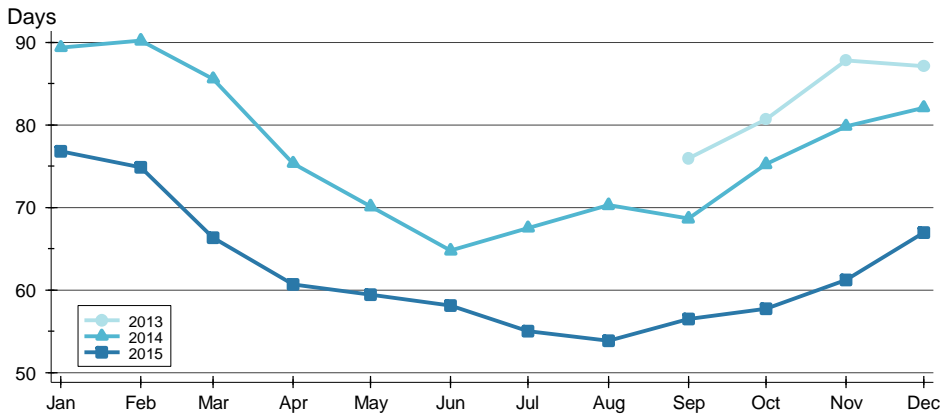


Month	2013	2014	2015
January	N/A	129,900	134,900
February	N/A	128,000	132,500
March	N/A	129,900	139,900
April	N/A	134,900	142,500
May	N/A	137,500	139,900
June	N/A	138,750	140,000
July	N/A	134,900	141,900
August	N/A	133,800	137,000
September	129,900	135,500	137,900
October	127,900	135,000	139,000
November	126,083	134,900	132,700
December	125,000	129,950	134,500

PENDING CONTRACTS ANALYSIS

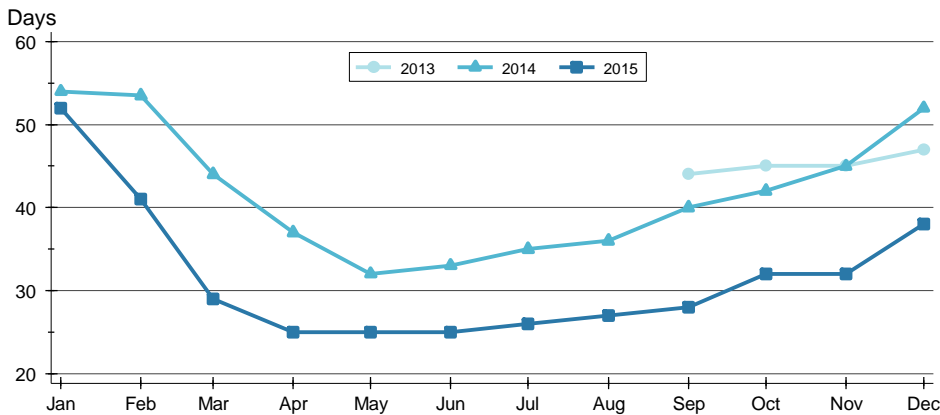
ENTIRE MLS SYSTEM
ALL HOMES
AS OF 1/15/2016

AVERAGE DOM >>



Month	2013	2014	2015
January	N/A	89	77
February	N/A	90	75
March	N/A	86	66
April	N/A	75	61
May	N/A	70	59
June	N/A	65	58
July	N/A	67	55
August	N/A	70	54
September	76	69	56
October	81	75	58
November	88	80	61
December	87	82	67

MEDIAN DOM >>



Month	2013	2014	2015
January	N/A	54	52
February	N/A	54	41
March	N/A	44	29
April	N/A	37	25
May	N/A	32	25
June	N/A	33	25
July	N/A	35	26
August	N/A	36	27
September	44	40	28
October	45	42	32
November	45	45	32
December	47	52	38